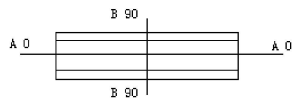
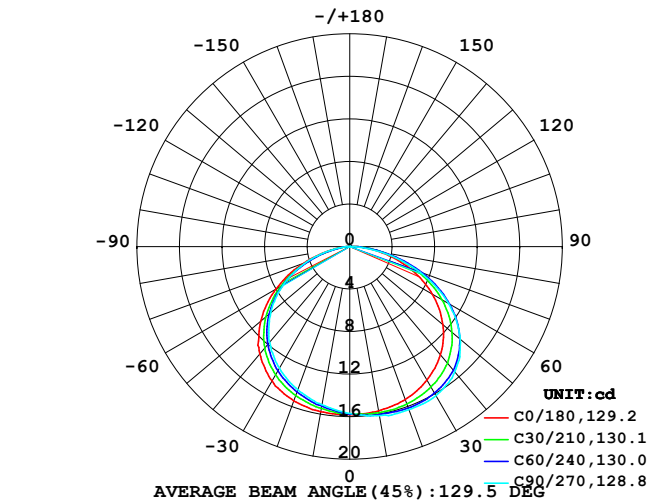


LUMINAIRE PHOTOMETRIC TEST REPORT

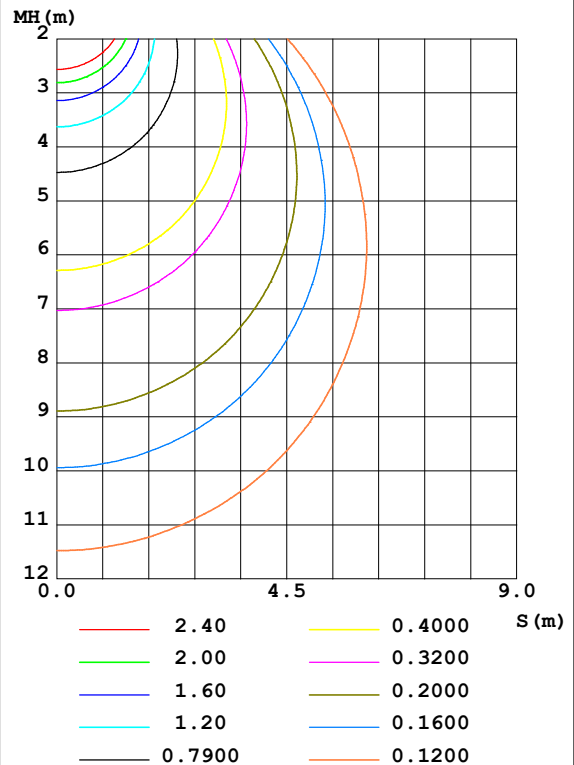
Test:U:24.00V I:0.222A P:5.33W PF:1.000 Freq:0Hz Lamp Flux:52.7178x1 lm		
NAME: 22408-4000R-B	TYPE:	WEIGHT:
SPEC.:	DIM.:	SERIAL No.: 2025123003
MFR.:	SUR.:	Shielding Angle:

DATA OF LAMP		PHOTOMETRIC DATA				Eff: 9.89 lm/W
MODEL		I _{max} (cd)	16.32	S/MH (C0/180)	1.37	
NOMINAL POWER (W)		LOR (%)	100.0	S/MH (C90/270)	1.26	
RATED VOLTAGE (V)	24	TOTAL FLUX (lm)	52.718	η UP, DN (C0-180)	0.1, 55.0	
NOMINAL FLUX (lm)	52.7178	CIE CLASS	DIRECT	η UP, DN (C180-360)	0.1, 44.8	
LAMPS INSIDE	1	η up (%)	0.2	CIBSE SHR NOM	1.50	
TEST VOLTAGE (V)	24	η down (%)	99.8	CIBSE SHR MAX	1.55	

LUMINOUS INTENSITY DISTRIBUTION DIAGRAM



C0 PLANE ISOLUX DIAGRAM (UNIT:lx)



C Range: 0 - 360DEG
C Interval: 15.0DEG
Test Speed: HIGH
Temperature: 25DEG
Operators: SENPU
Test Date: 2025-12-30

γ Range: 0 - 100DEG
γ Interval: 1.0DEG
Test System: EVERFINE GO-2000B_V1 SYSTEM V2.00.444
Humidity: 61%
Test Distance: 8.000m [K=1.0000]
Remarks:

ZONAL FLUX DIAGRAM

ZONAL FLUX DIAGRAM:

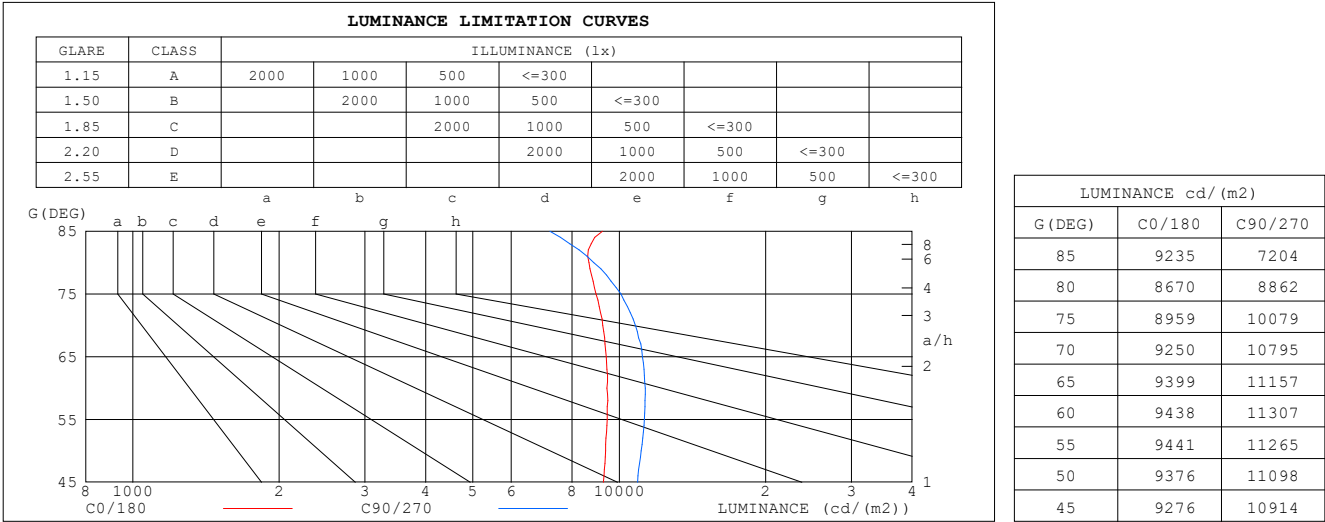
γ	C0	C45	C90	C135	C180	C225	C270	C315	γ	Φ zone	Φ total	%lum,lamp
10	15.68	15.93	16.14	16.06	15.77	15.40	15.10	15.25	0- 10	1.499	1.499	2.84,2.84
20	15.30	15.88	16.31	16.02	15.44	14.73	14.32	14.54	10- 20	4.388	5.887	11.2,11.2
30	14.51	15.56	16.20	15.59	14.61	13.74	13.22	13.51	20- 30	6.925	12.81	24.3,24.3
40	13.28	14.73	15.36	14.54	13.19	12.22	11.74	12.10	30- 40	8.796	21.61	41,41
50	11.45	13.12	13.55	12.59	10.93	10.07	9.724	10.23	40- 50	9.630	31.24	59.3,59.3
60	8.966	10.58	10.74	9.688	8.036	7.315	7.230	7.874	50- 60	9.088	40.33	76.5,76.5
70	6.011	7.167	7.015	5.987	4.664	4.165	4.363	5.026	60- 70	7.107	47.43	90,90
80	2.861	3.325	2.924	2.207	1.559	1.324	1.479	2.079	70- 80	4.037	51.47	97.6,97.6
90	0.6404	0.5487	0.0542	0.1330	0.0354	0.1333	0.0177	0.3380	80- 90	1.142	52.61	99.8,99.8
100	0.0799	0.0355	0.0177	0.0177	0.0266	0.0355	0.0177	0.0266	90-100	0.1027	52.72	100,100
110	0	0	0	0	0	0	0	0	100-110	0.0016	52.72	100,100
120	0	0	0	0	0	0	0	0	110-120	0	52.72	100,100
130	0	0	0	0	0	0	0	0	120-130	0	52.72	100,100
140	0	0	0	0	0	0	0	0	130-140	0	52.72	100,100
150	0	0	0	0	0	0	0	0	140-150	0	52.72	100,100
160	0	0	0	0	0	0	0	0	150-160	0	52.72	100,100
170	0	0	0	0	0	0	0	0	160-170	0	52.72	100,100
180	0	0	0	0	0	0	0	0	170-180	0	52.72	100,100
DEG	LUMINOUS INTENSITY:cd									UNIT:lm		

C Range: 0 - 360DEG
 C Interval: 15.0DEG
 Test Speed: HIGH
 Temperature:25DEG
 Operators:SENPU
 Test Date:2025-12-30

γ Range: 0 - 100DEG
 γ Interval: 1.0DEG
 Test System:EVERFINE GO-2000B_V1 SYSTEM V2.00.444
 Humidity:61%
 Test Distance:8.000m [K=1.0000]
 Remarks:

LUMINANCE LIMITATION CURVES

Test:U:24.00V I:0.222A P:5.33W PF:1.000 Freq:0Hz Lamp Flux:52.7178x1 lm		
NAME: 22408-4000R-B	TYPE:	WEIGHT:
SPEC.:	DIM.:	SERIAL No.: 2025123003
MFR.:	SUR.:	Shielding Angle:



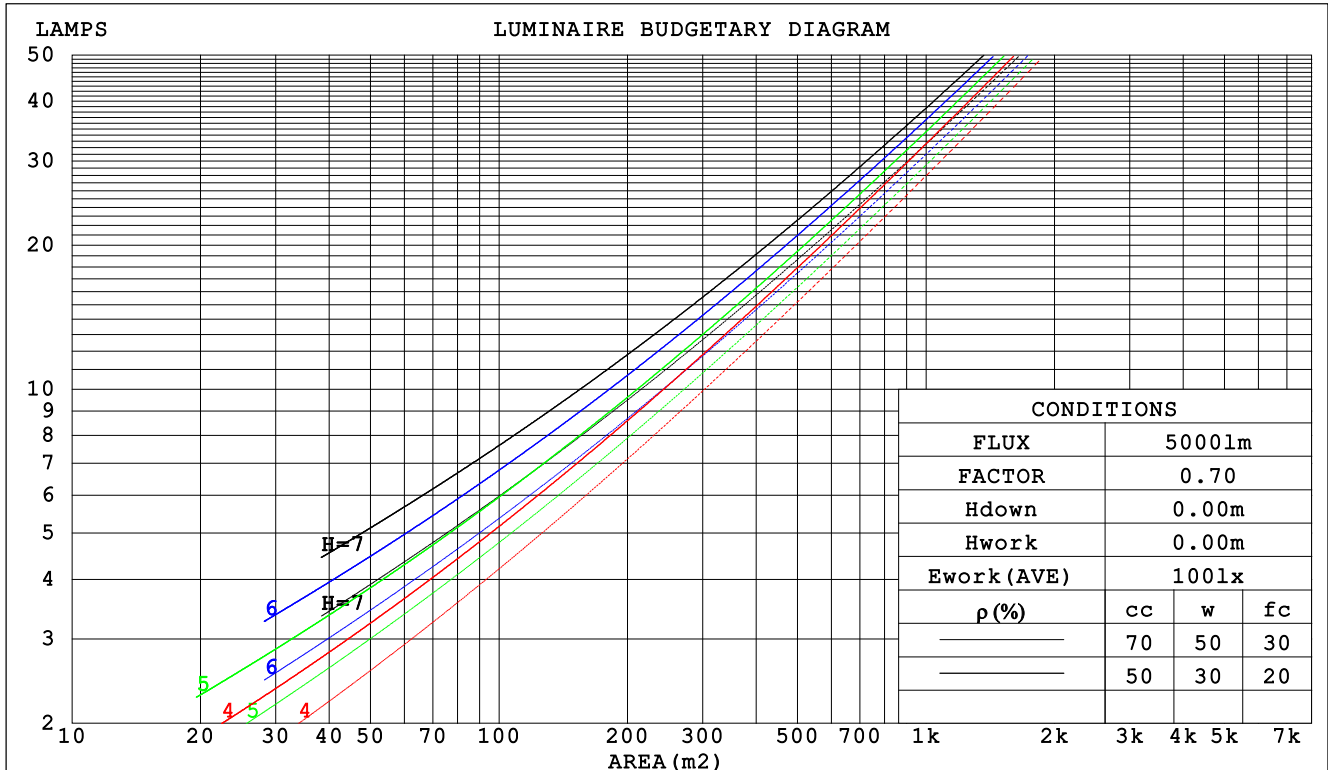
C Range: 0 - 360DEG
C Interval: 15.0DEG
Test Speed: HIGH
Temperature:25DEG
Operators:SENPU
Test Date:2025-12-30

γ Range: 0 - 100DEG
γ Interval: 1.0DEG
Test System:EVERFINE GO-2000B_V1 SYSTEM V2.00.444
Humidity:61%
Test Distance:8.000m [K=1.0000]
Remarks:

CU AND LUMINAIRE BUDGETARY ESTIMATE DIAGRAM

Test:U:24.00V I:0.222A P:5.33W PF:1.000 Freq:0Hz Lamp Flux:52.7178x1 lm		
NAME: 22408-4000R-B	TYPE:	WEIGHT:
SPEC.:	DIM.:	SERIAL No.: 2025123003
MFR.:	SUR.:	Shielding Angle:

ρ_{cc}	80%			70%			50%			30%			10%			0
ρ_w	50%	30%	10%	50%	30%	10%	50%	30%	10%	50%	30%	10%	50%	30%	10%	0
ρ_{fc}	20%			20%			20%			20%			20%			0
RCR	RCR:Room Cavity Ratio						Coefficients of Utilization(CU)									
0.0	1.19	1.19	1.19	1.16	1.16	1.16	1.11	1.11	1.11	1.06	1.06	1.06	1.02	1.02	1.02	.00
1.0	1.03	.99	.95	1.01	.97	.93	.97	.93	.90	.93	.90	.87	.89	.87	.85	.83
2.0	.89	.82	.76	.87	.81	.75	.84	.78	.73	.80	.76	.72	.77	.74	.70	.68
3.0	.78	.69	.63	.76	.68	.62	.73	.66	.61	.70	.65	.60	.68	.63	.59	.56
4.0	.69	.60	.53	.67	.59	.52	.65	.57	.51	.62	.56	.51	.60	.55	.50	.48
5.0	.61	.52	.45	.60	.51	.45	.58	.50	.44	.56	.49	.44	.54	.48	.43	.41
6.0	.55	.45	.39	.54	.45	.39	.52	.44	.38	.50	.43	.38	.49	.42	.38	.35
7.0	.49	.40	.34	.49	.40	.34	.47	.39	.34	.46	.39	.33	.44	.38	.33	.31
8.0	.45	.36	.30	.44	.36	.30	.43	.35	.30	.42	.35	.30	.40	.34	.29	.27
9.0	.41	.33	.27	.41	.32	.27	.39	.32	.27	.38	.31	.27	.37	.31	.26	.25
10.0	.38	.30	.24	.37	.30	.24	.36	.29	.24	.35	.29	.24	.34	.28	.24	.22



C Range: 0 - 360DEG
C Interval: 15.0DEG
Test Speed: HIGH
Temperature:25DEG
Operators:SENPU
Test Date:2025-12-30

γ Range: 0 - 100DEG
 γ Interval: 1.0DEG
Test System:EVERFINE GO-2000B_V1 SYSTEM V2.00.444
Humidity:61%
Test Distance:8.000m [K=1.0000]
Remarks:

WEC AND CCEC

Test:U:24.00V I:0.222A P:5.33W PF:1.000 Freq:0Hz Lamp Flux:52.7178x1 lm		
NAME: 22408-4000R-B	TYPE:	WEIGHT:
SPEC.:	DIM.:	SERIAL No.: 2025123003
MFR.:	SUR.:	Shielding Angle:

pcc	80%			70%			50%			30%			10%			0	
pw	50%	30%	10%	50%	30%	10%	50%	30%	10%	50%	30%	10%	50%	30%	10%	0	
pfc	20%			20%			20%			20%			20%			0	
RCR	RCR:Room Cavity Ratio						Wall Exitance Coefficients (WEC)										
0.0																	
1.0	.322	.183	.058	.315	.180	.057	.301	.173	.055	.289	.167	.053	.278	.161	.052		
2.0	.302	.166	.051	.296	.163	.050	.284	.158	.049	.273	.153	.048	.263	.149	.047		
3.0	.279	.148	.044	.273	.146	.044	.263	.142	.043	.253	.139	.043	.244	.135	.042		
4.0	.257	.133	.039	.252	.132	.039	.242	.129	.038	.234	.125	.038	.226	.123	.037		
5.0	.237	.121	.035	.232	.119	.035	.224	.117	.034	.216	.114	.034	.209	.112	.034		
6.0	.219	.110	.031	.215	.109	.031	.208	.106	.031	.201	.104	.031	.194	.102	.030		
7.0	.204	.101	.029	.200	.100	.028	.193	.098	.028	.187	.096	.028	.181	.094	.028		
8.0	.190	.093	.026	.187	.092	.026	.181	.090	.026	.175	.089	.026	.170	.087	.025		
9.0	.178	.086	.024	.175	.085	.024	.169	.084	.024	.164	.082	.024	.160	.081	.023		
10.0	.167	.080	.022	.164	.079	.022	.159	.078	.022	.155	.077	.022	.151	.076	.022		

pcc	80%			70%			50%			30%			10%			0
pw	50%	30%	10%	50%	30%	10%	50%	30%	10%	50%	30%	10%	50%	30%	10%	0
pfc	20%			20%			20%			20%			20%			0
RCR	RCR:Room Cavity Ratio						Ceiling Cavity Exitance Coefficients(CCEC)									
0.0	.192	.192	.192	.164	.164	.164	.112	.112	.112	.064	.064	.064	.021	.021	.021	
1.0	.183	.158	.135	.156	.135	.116	.107	.093	.080	.062	.054	.047	.020	.017	.015	
2.0	.175	.133	.098	.150	.115	.085	.103	.079	.059	.059	.046	.035	.019	.015	.011	
3.0	.168	.116	.075	.144	.100	.065	.099	.069	.045	.057	.041	.027	.018	.013	.009	
4.0	.160	.103	.059	.138	.089	.051	.095	.062	.036	.055	.036	.021	.018	.012	.007	
5.0	.153	.092	.048	.131	.080	.042	.090	.056	.029	.052	.033	.017	.017	.011	.006	
6.0	.146	.084	.040	.125	.073	.035	.086	.051	.025	.050	.030	.015	.016	.010	.005	
7.0	.139	.077	.034	.119	.067	.030	.082	.047	.021	.048	.028	.013	.015	.009	.004	
8.0	.132	.071	.030	.114	.062	.026	.079	.044	.018	.046	.026	.011	.015	.008	.004	
9.0	.126	.067	.026	.109	.058	.023	.075	.041	.016	.044	.024	.010	.014	.008	.003	
10.0	.120	.062	.024	.104	.054	.021	.072	.038	.015	.042	.022	.009	.014	.007	.003	

C Range: 0 - 360DEG
C Interval: 15.0DEG
Test Speed: HIGH
Temperature:25DEG
Operators:SENPU
Test Date:2025-12-30

γ Range: 0 - 100DEG
γ Interval: 1.0DEG
Test System:EVERFINE GO-2000B_V1 SYSTEM V2.00.444
Humidity:61%
Test Distance:8.000m [K=1.0000]
Remarks:

UGR(Unified Glare Rating) Table

Test:U:24.00V I:0.222A P:5.33W PF:1.000 Freq:0Hz Lamp Flux:52.7178x1 lm										
NAME: 22408-4000R-B					TYPE:			WEIGHT:		
SPEC.:					DIM.:			SERIAL No.: 2025123003		
MFR.:					SUR.:			Shielding Angle:		
ceiling/cavity	0.7	0.7	0.5	0.5	0.3	0.7	0.7	0.5	0.5	0.3
walls	0.5	0.3	0.5	0.3	0.3	0.5	0.3	0.5	0.3	0.3
working plane	0.2	0.2	0.2	0.2	0.2	0.2	0.2	0.2	0.2	0.2
Room dimensions	Viewed crosswise					Viewed endwise				
x = 2H y = 2H	21.4	22.9	21.6	23.1	23.3	22.1	23.7	22.4	23.9	24.1
3H	23.1	24.5	23.4	24.7	25.0	23.9	25.4	24.2	25.6	25.8
4H	23.8	25.1	24.1	25.4	25.7	24.6	26.0	24.9	26.2	26.5
6H	24.3	25.6	24.6	25.9	26.2	25.1	26.4	25.4	26.7	27.0
8H	24.5	25.8	24.9	26.1	26.4	25.2	26.5	25.6	26.8	27.1
12H	24.7	25.9	25.0	26.2	26.5	25.3	26.5	25.7	26.8	27.1
4H 2H	22.2	23.6	22.6	23.9	24.1	22.8	24.2	23.1	24.5	24.7
3H	24.1	25.3	24.5	25.6	25.9	24.8	26.0	25.1	26.3	26.6
4H	25.0	26.1	25.3	26.4	26.7	25.6	26.7	26.0	27.1	27.4
6H	25.6	26.6	26.0	27.0	27.3	26.2	27.2	26.6	27.6	28.0
8H	25.9	26.8	26.3	27.2	27.6	26.4	27.4	26.9	27.7	28.1
12H	26.1	26.9	26.5	27.3	27.7	26.6	27.4	27.0	27.8	28.2
8H 4H	25.4	26.3	25.8	26.7	27.0	25.9	26.9	26.4	27.2	27.6
6H	26.2	27.0	26.7	27.4	27.8	26.7	27.5	27.2	27.9	28.3
8H	26.6	27.3	27.1	27.7	28.1	27.0	27.7	27.5	28.1	28.6
12H	26.9	27.5	27.4	27.9	28.4	27.3	27.8	27.7	28.3	28.8
12H 4H	25.4	26.2	25.8	26.6	27.1	26.0	26.8	26.4	27.2	27.6
6H	26.3	27.0	26.8	27.4	27.9	26.8	27.5	27.3	27.9	28.4
8H	26.8	27.3	27.2	27.8	28.3	27.2	27.8	27.7	28.2	28.7
Variations with the observer position at spacings(CIE Pub.117):										
S = 1.0H	+ 0.1 / - 0.2					+ 0.1 / - 0.2				
1.5H	+ 0.2 / - 0.4					+ 0.2 / - 0.3				
2.0H	+ 0.2 / - 0.5					+ 0.2 / - 0.4				

CIE Pub.117, 52.72 lm Total Lamp Luminous Flux Corrected ($8\log(F/F_0) = -10.2$)
Area: 0.0019 m²

C Range: 0 - 360DEG
C Interval: 15.0DEG
Test Speed: HIGH
Temperature:25DEG
Operators:SENPU
Test Date:2025-12-30

γ Range: 0 - 100DEG
 γ Interval: 1.0DEG
Test System:EVERFINE GO-2000B_V1 SYSTEM V2.00.444
Humidity:61%
Test Distance:8.000m [K=1.0000]
Remarks:

UTILIZATION FACTORS TABLE

Test:U:24.00V I:0.222A P:5.33W PF:1.000 Freq:0Hz Lamp Flux:52.7178x1 lm		
NAME: 22408-4000R-B	TYPE:	WEIGHT:
SPEC.:	DIM.:	SERIAL No.: 2025123003
MFR.:	SUR.:	Shielding Angle:

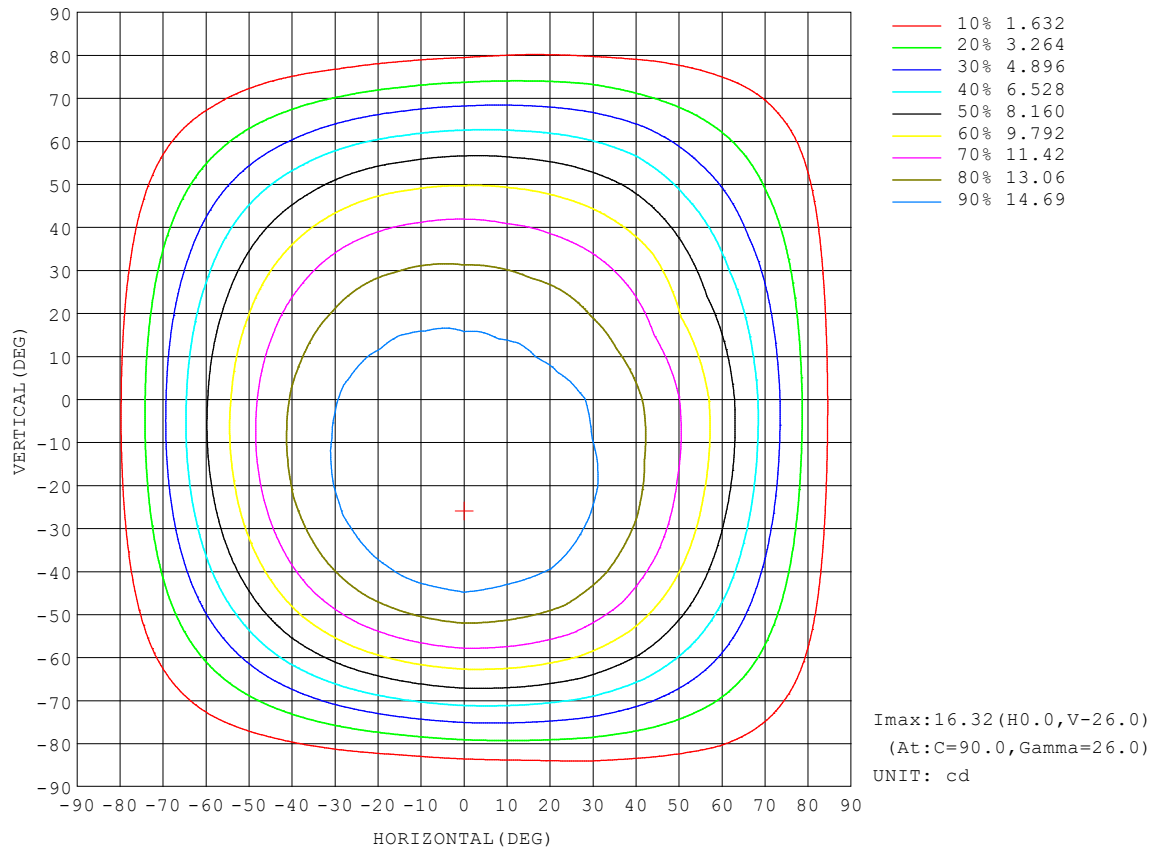
REFLECTANCE										
Ceiling	0.8	0.8	0.8	0.7	0.7	0.7	0.5	0.5	0.5	0
Walls	0.7	0.5	0.3	0.7	0.5	0.3	0.7	0.5	0.3	0
Working plane	0.2	0.2	0.2	0.2	0.2	0.2	0.2	0.2	0.2	0
ROOM INDEX	UTILIZATION FACTORS (PERCENT) $k(RI) \times RCR = 5$									
$k = 0.60$	55	43	36	55	43	36	53	43	36	29
0.80	65	53	46	64	53	46	63	52	45	38
1.00	74	63	55	73	62	55	71	63	54	47
1.25	81	70	63	80	70	63	77	68	62	54
1.50	87	76	69	85	75	68	82	73	67	60
2.00	94	85	78	92	84	77	88	81	76	68
2.50	98	90	83	96	88	82	92	86	81	72
3.00	101	94	88	99	93	87	95	90	85	76
4.00	106	100	95	103	98	93	99	94	91	82
5.00	108	103	99	106	101	97	101	97	94	85
ROOM INDEX	UF (total)									Direct
According to DIN EN 13032-2 2004			Suspended					SHRNOM = 1.25		

C Range: 0 - 360DEG
 C Interval: 15.0DEG
 Test Speed: HIGH
 Temperature: 25DEG
 Operators: SENPU
 Test Date: 2025-12-30

γ Range: 0 - 100DEG
 γ Interval: 1.0DEG
 Test System: EVERFINE GO-2000B_V1 SYSTEM V2.00.444
 Humidity: 61%
 Test Distance: 8.000m [K=1.0000]
 Remarks:

ISOCANDELA DIAGRAM

Test:U:24.00V I:0.222A P:5.33W PF:1.000 Freq:0Hz Lamp Flux:52.7178x1 lm		
NAME: 22408-4000R-B	TYPE:	WEIGHT:
SPEC.:	DIM.:	SERIAL No.: 2025123003
MFR.:	SUR.:	Shielding Angle:

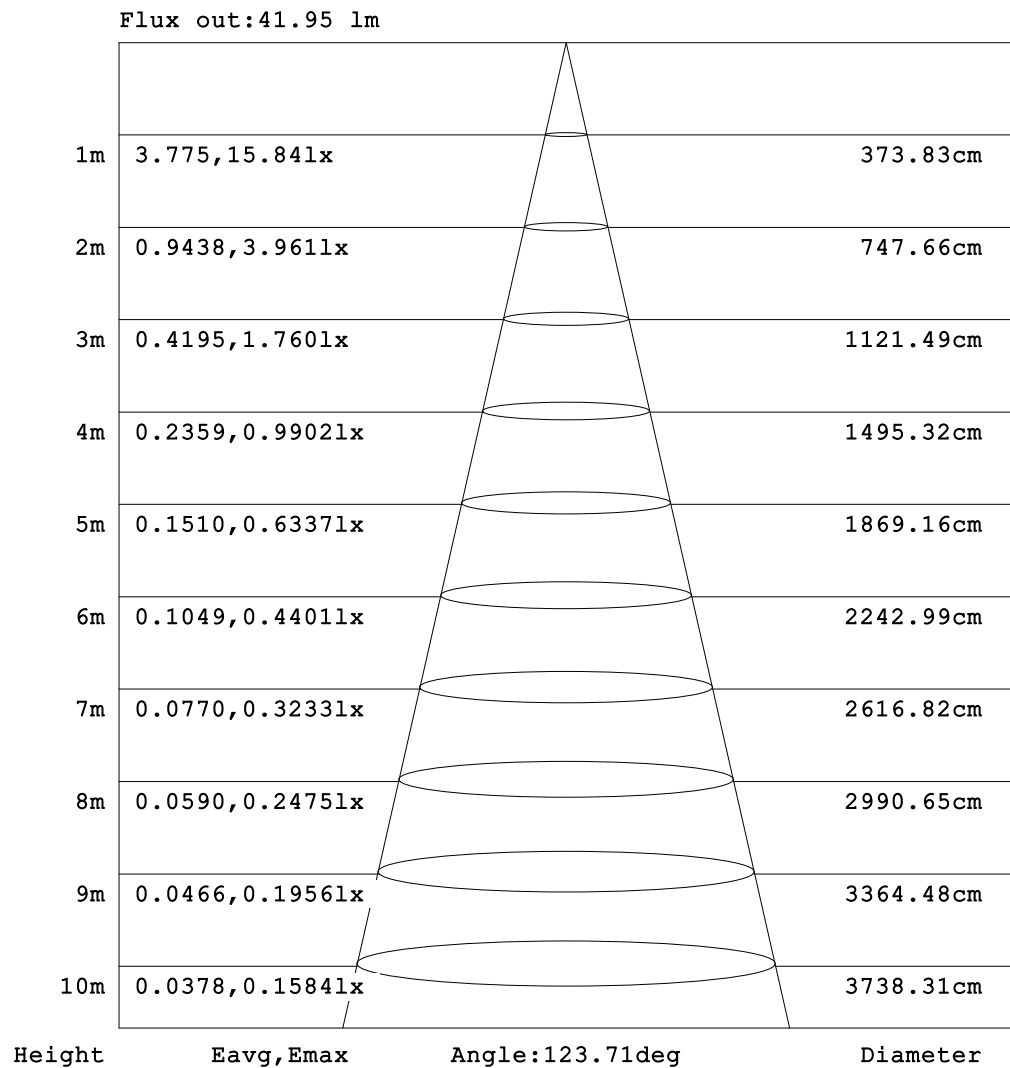


C Range: 0 - 360DEG
C Interval: 15.0DEG
Test Speed: HIGH
Temperature:25DEG
Operators:SENPU
Test Date:2025-12-30

γ Range: 0 - 100DEG
 γ Interval: 1.0DEG
Test System:EVERFINE GO-2000B_V1 SYSTEM V2.00.444
Humidity:61%
Test Distance:8.000m [K=1.0000]
Remarks:

AAI Figure

Test:U:24.00V I:0.222A P:5.33W PF:1.000 Freq:0Hz Lamp Flux:52.7178x1 lm		
NAME: 22408-4000R-B	TYPE:	WEIGHT:
SPEC.:	DIM.:	SERIAL No.: 2025123003
MFR.:	SUR.:	Shielding Angle:



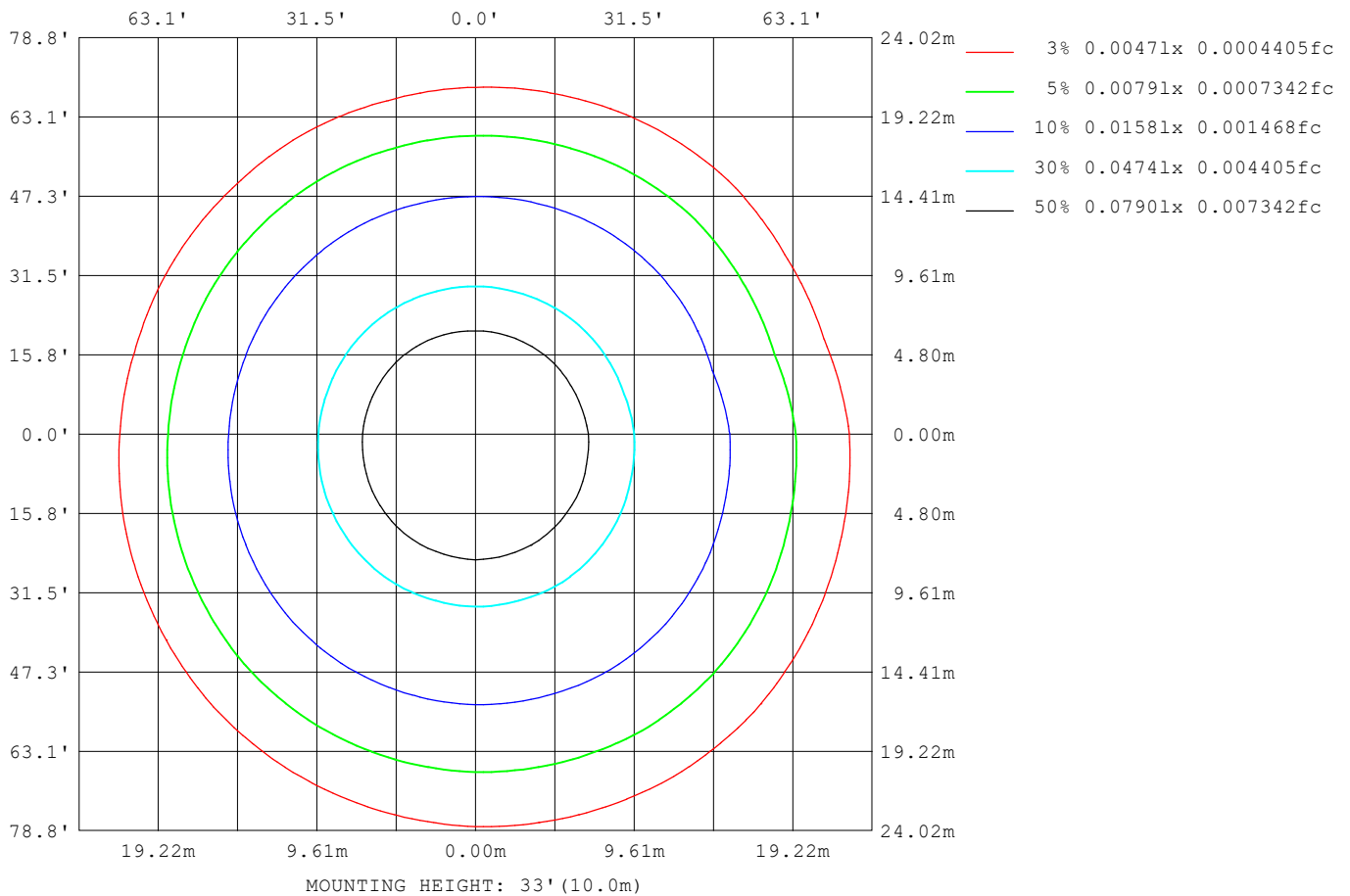
Note:The Curves indicate the illuminated area and the average illumination when the luminaire is at different distance.

C Range: 0 - 360DEG
C Interval: 15.0DEG
Test Speed: HIGH
Temperature:25DEG
Operators:SENPU
Test Date:2025-12-30

γ Range: 0 - 100DEG
γ Interval: 1.0DEG
Test System:EVERFINE GO-2000B_V1 SYSTEM V2.00.444
Humidity:61%
Test Distance:8.000m [K=1.0000]
Remarks:

ISOLUX DIAGRAM

Test:U:24.00V I:0.222A P:5.33W PF:1.000 Freq:0Hz Lamp Flux:52.7178x1 lm		
NAME: 22408-4000R-B	TYPE:	WEIGHT:
SPEC.:	DIM.:	SERIAL No.: 2025123003
MFR.:	SUR.:	Shielding Angle:



C Range: 0 - 360DEG
 C Interval: 15.0DEG
 Test Speed: HIGH
 Temperature: 25DEG
 Operators: SENPU
 Test Date: 2025-12-30

γ Range: 0 - 100DEG
 γ Interval: 1.0DEG
 Test System: EVERFINE GO-2000B_V1 SYSTEM V2.00.444
 Humidity: 61%
 Test Distance: 8.000m [K=1.0000]
 Remarks:

LED Avg.L Report

Test:U:24.00V I:0.222A P:5.33W PF:1.000 Freq:0Hz Lamp Flux:52.7178x1 lm		
NAME: 22408-4000R-B	TYPE:	WEIGHT:
SPEC.:	DIM.:	SERIAL No.: 2025123003
MFR.:	SUR.:	Shielding Angle:

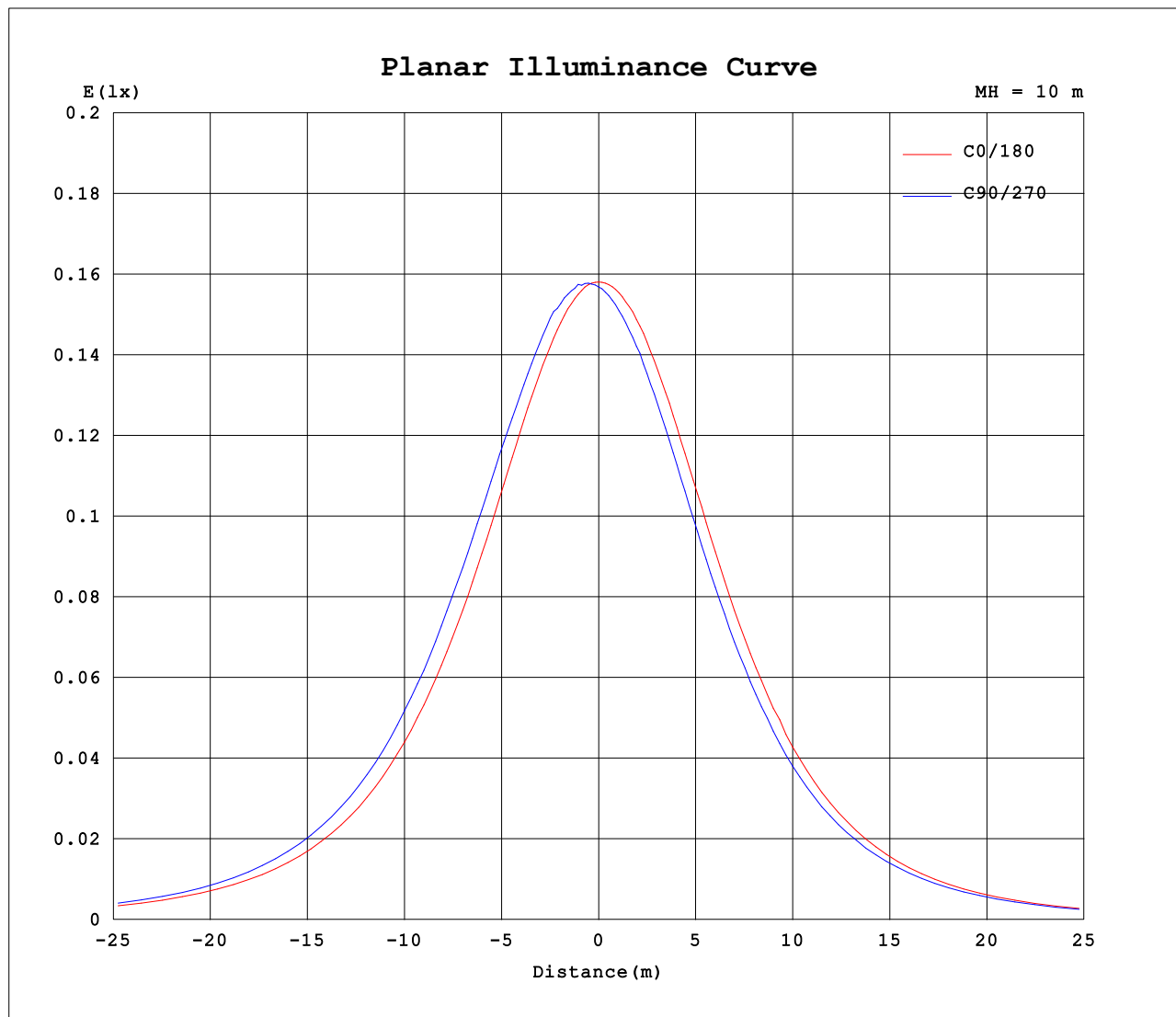
AvgL	cd/m2
L_0~180 (65) av	8676
L_0~180 (75) av	7508
L_0~180 (85) av	6246
L_90~270 (65) av	9213
L_90~270 (75) av	7951
L_90~270 (85) av	4991
L_45 (65) av	9071
L_45 (75) av	7823
L_45 (85) av	6013

Standard: GB/T 29293-2012

C Range: 0 - 360DEG
C Interval: 15.0DEG
Test Speed: HIGH
Temperature:25DEG
Operators:SENPU
Test Date:2025-12-30

γ Range: 0 - 100DEG
γ Interval: 1.0DEG
Test System:EVERFINE GO-2000B_V1 SYSTEM V2.00.444
Humidity:61%
Test Distance:8.000m [K=1.0000]
Remarks:

Planar Illuminance Curve



C Range: 0 - 360DEG
C Interval: 15.0DEG
Test Speed: HIGH
Temperature: 25DEG
Operators: SENPU
Test Date: 2025-12-30

γ Range: 0 - 100DEG
 γ Interval: 1.0DEG
Test System: EVERFINE GO-2000B_V1 SYSTEM V2.00.444
Humidity: 61%
Test Distance: 8.000m [K=1.0000]
Remarks:

LUMINOUS DISTRIBUTION INTENSITY DATA

Test:U:24.00V I:0.222A P:5.33W PF:1.000 Freq:0Hz Lamp Flux:52.7178x1 lm																			
NAME: 22408-4000R-B										TYPE:					WEIGHT:				
SPEC.:										DIM.:					SERIAL No.: 2025123003				
MFR.:										SUR.:					Shielding Angle:				

Table--1

UNIT: cd

C (DEG) γ (DEG)	0	15	30	45	60	75	90	105	120	135	150	165	180	195	210	225	240	255	270
0	15.8	15.8	15.8	15.8	15.8	15.8	15.7	15.8	15.7	15.8	15.7	15.8	15.8	15.8	15.8	15.8	15.8	15.8	15.7
5	15.8	15.8	15.8	15.9	15.9	16.0	15.9	16.0	15.9	16.0	15.8	15.9	15.8	15.8	15.8	15.6	15.6	15.5	15.4
10	15.7	15.7	15.8	15.9	16.0	16.1	16.1	16.2	16.1	16.1	15.9	15.8	15.8	15.7	15.4	15.4	15.2	15.2	15.1
15	15.5	15.6	15.8	15.9	16.1	16.2	16.3	16.3	16.2	16.1	15.9	15.7	15.6	15.5	15.2	15.1	14.9	14.9	14.7
20	15.3	15.4	15.7	15.9	16.1	16.2	16.3	16.3	16.2	16.0	15.9	15.6	15.4	15.2	14.9	14.7	14.5	14.4	14.3
25	15.0	15.1	15.6	15.8	16.1	16.1	16.3	16.2	16.1	15.9	15.7	15.3	15.1	14.8	14.5	14.3	14.1	13.9	13.8
30	14.5	14.8	15.3	15.6	15.9	16.0	16.2	16.0	15.9	15.6	15.3	14.9	14.6	14.3	13.9	13.7	13.5	13.3	13.2
35	14.0	14.3	14.8	15.2	15.6	15.7	15.9	15.7	15.5	15.1	14.8	14.3	13.9	13.6	13.3	13.0	12.8	12.6	12.5
40	13.3	13.7	14.3	14.7	15.2	15.3	15.4	15.2	15.0	14.5	14.1	13.6	13.2	12.7	12.4	12.2	12.0	11.8	11.7
45	12.5	12.9	13.5	14.0	14.5	14.5	14.7	14.4	14.1	13.7	13.2	12.7	12.1	11.7	11.4	11.2	11.0	10.8	10.8
50	11.5	11.9	12.6	13.1	13.5	13.5	13.6	13.3	13.0	12.6	12.0	11.4	10.9	10.6	10.3	10.1	9.91	9.75	9.72
55	10.3	10.7	11.4	12.0	12.3	12.3	12.3	12.0	11.7	11.3	10.6	10.1	9.58	9.18	8.95	8.76	8.65	8.51	8.53
60	8.97	9.43	10.0	10.6	10.9	10.9	10.7	10.5	10.1	9.69	9.06	8.53	8.04	7.67	7.50	7.31	7.25	7.16	7.23
65	7.55	7.94	8.49	8.95	9.18	9.10	8.96	8.68	8.36	7.90	7.33	6.85	6.39	6.04	5.90	5.75	5.79	5.70	5.84
70	6.01	6.33	6.79	7.17	7.29	7.18	7.01	6.71	6.38	5.99	5.49	5.08	4.66	4.40	4.25	4.16	4.16	4.19	4.36
75	4.41	4.66	5.00	5.23	5.30	5.14	4.96	4.64	4.35	4.03	3.66	3.36	2.98	2.82	2.66	2.63	2.62	2.70	2.86
80	2.86	3.00	3.21	3.32	3.31	3.12	2.92	2.64	2.44	2.21	2.04	1.84	1.56	1.46	1.34	1.32	1.24	1.34	1.48
85	1.53	1.57	1.69	1.66	1.58	1.37	1.19	1.02	0.98	0.86	0.84	0.73	0.54	0.55	0.43	0.47	0.37	0.45	0.46
90	0.64	0.62	0.67	0.55	0.45	0.18	0.05	0.06	0.16	0.13	0.19	0.12	0.04	0.12	0.04	0.13	0.11	0.11	0.02
95	0.26	0.17	0.22	0.11	0.08	0.00	0.03	0.00	0.06	0.02	0.06	0.04	0.03	0.04	0.03	0.05	0.01	0.04	0.02
100	0.08	0.06	0.05	0.04	0.03	0.00	0.02	0.00	0.03	0.02	0.04	0.04	0.03	0.03	0.03	0.04	0.01	0.02	0.02
105	0.00	0.00	0.00	0.00	0.00	0.00	0.00	0.00	0.00	0.00	0.00	0.00	0.00	0.00	0.00	0.00	0.00	0.00	0.00
110	0.00	0.00	0.00	0.00	0.00	0.00	0.00	0.00	0.00	0.00	0.00	0.00	0.00	0.00	0.00	0.00	0.00	0.00	0.00
115	0.00	0.00	0.00	0.00	0.00	0.00	0.00	0.00	0.00	0.00	0.00	0.00	0.00	0.00	0.00	0.00	0.00	0.00	0.00
120	0.00	0.00	0.00	0.00	0.00	0.00	0.00	0.00	0.00	0.00	0.00	0.00	0.00	0.00	0.00	0.00	0.00	0.00	0.00
125	0.00	0.00	0.00	0.00	0.00	0.00	0.00	0.00	0.00	0.00	0.00	0.00	0.00	0.00	0.00	0.00	0.00	0.00	0.00
130	0.00	0.00	0.00	0.00	0.00	0.00	0.00	0.00	0.00	0.00	0.00	0.00	0.00	0.00	0.00	0.00	0.00	0.00	0.00
135	0.00	0.00	0.00	0.00	0.00	0.00	0.00	0.00	0.00	0.00	0.00	0.00	0.00	0.00	0.00	0.00	0.00	0.00	0.00
140	0.00	0.00	0.00	0.00	0.00	0.00	0.00	0.00	0.00	0.00	0.00	0.00	0.00	0.00	0.00	0.00	0.00	0.00	0.00
145	0.00	0.00	0.00	0.00	0.00	0.00	0.00	0.00	0.00	0.00	0.00	0.00	0.00	0.00	0.00	0.00	0.00	0.00	0.00
150	0.00	0.00	0.00	0.00	0.00	0.00	0.00	0.00	0.00	0.00	0.00	0.00	0.00	0.00	0.00	0.00	0.00	0.00	0.00
155	0.00	0.00	0.00	0.00	0.00	0.00	0.00	0.00	0.00	0.00	0.00	0.00	0.00	0.00	0.00	0.00	0.00	0.00	0.00
160	0.00	0.00	0.00	0.00	0.00	0.00	0.00	0.00	0.00	0.00	0.00	0.00	0.00	0.00	0.00	0.00	0.00	0.00	0.00
165	0.00	0.00	0.00	0.00	0.00	0.00	0.00	0.00	0.00	0.00	0.00	0.00	0.00	0.00	0.00	0.00	0.00	0.00	0.00
170	0.00	0.00	0.00	0.00	0.00	0.00	0.00	0.00	0.00	0.00	0.00	0.00	0.00	0.00	0.00	0.00	0.00	0.00	0.00
175	0.00	0.00	0.00	0.00	0.00	0.00	0.00	0.00	0.00	0.00	0.00	0.00	0.00	0.00	0.00	0.00	0.00	0.00	0.00
180	0.00	0.00	0.00	0.00	0.00	0.00	0.00	0.00	0.00	0.00	0.00	0.00	0.00	0.00	0.00	0.00	0.00	0.00	0.00

C Range: 0 - 360DEG
C Interval: 15.0DEG
Test Speed: HIGH
Temperature:25DEG
Operators:SENPU
Test Date:2025-12-30

γ Range: 0 - 100DEG
γ Interval: 1.0DEG
Test System:EVERFINE GO-2000B_V1 SYSTEM V2.00.444
Humidity:61%
Test Distance:8.000m [K=1.0000]
Remarks:

LUMINOUS DISTRIBUTION INTENSITY DATA

Test:U:24.00V I:0.222A P:5.33W PF:1.000 Freq:0Hz Lamp Flux:52.7178x1 lm		
NAME: 22408-4000R-B	TYPE:	WEIGHT:
SPEC.:	DIM.:	SERIAL No.: 2025123003
MFR.:	SUR.:	Shielding Angle:

Table--2

UNIT: cd

C (DEG) γ (DEG)	285	300	315	330	345														
0	15.8	15.7	15.8	15.7	15.8														
5	15.5	15.4	15.6	15.5	15.7														
10	15.2	15.1	15.2	15.3	15.5														
15	14.8	14.8	14.9	15.0	15.2														
20	14.4	14.4	14.5	14.6	14.9														
25	13.8	13.9	14.1	14.2	14.5														
30	13.2	13.3	13.5	13.7	14.0														
35	12.5	12.6	12.9	13.0	13.4														
40	11.7	11.9	12.1	12.3	12.6														
45	10.8	11.0	11.2	11.4	11.7														
50	9.81	10.00	10.2	10.5	10.6														
55	8.66	8.89	9.12	9.28	9.32														
60	7.40	7.66	7.87	7.93	8.09														
65	6.02	6.31	6.53	6.51	6.73														
70	4.58	4.84	5.03	5.06	5.30														
75	3.13	3.40	3.50	3.64	3.84														
80	1.74	1.92	2.08	2.23	2.44														
85	0.68	0.70	1.00	1.10	1.26														
90	0.12	0.12	0.34	0.41	0.55														
95	0.03	0.02	0.10	0.12	0.22														
100	0.02	0.02	0.03	0.02	0.06														
105	0.00	0.00	0.00	0.00	0.00														
110	0.00	0.00	0.00	0.00	0.00														
115	0.00	0.00	0.00	0.00	0.00														
120	0.00	0.00	0.00	0.00	0.00														
125	0.00	0.00	0.00	0.00	0.00														
130	0.00	0.00	0.00	0.00	0.00														
135	0.00	0.00	0.00	0.00	0.00														
140	0.00	0.00	0.00	0.00	0.00														
145	0.00	0.00	0.00	0.00	0.00														
150	0.00	0.00	0.00	0.00	0.00														
155	0.00	0.00	0.00	0.00	0.00														
160	0.00	0.00	0.00	0.00	0.00														
165	0.00	0.00	0.00	0.00	0.00														
170	0.00	0.00	0.00	0.00	0.00														
175	0.00	0.00	0.00	0.00	0.00														
180	0.00	0.00	0.00	0.00	0.00														

C Range: 0 - 360DEG
 C Interval: 15.0DEG
 Test Speed: HIGH
 Temperature:25DEG
 Operators:SENPU
 Test Date:2025-12-30

γ Range: 0 - 100DEG
 γ Interval: 1.0DEG
 Test System:EVERFINE GO-2000B_V1 SYSTEM V2.00.444
 Humidity:61%
 Test Distance:8.000m [K=1.0000]
 Remarks: